

□ **Vacuum Oven**



VO-30

**TEMPERATURE**  
+35°C ~ +350°C

**VACUUM**  
-133pa



Automobile



Material



Electronics



Aerospace



Navigation



Commodity



Paintings



Battery



Pharmaceutical



Military

【Technical Parameter】

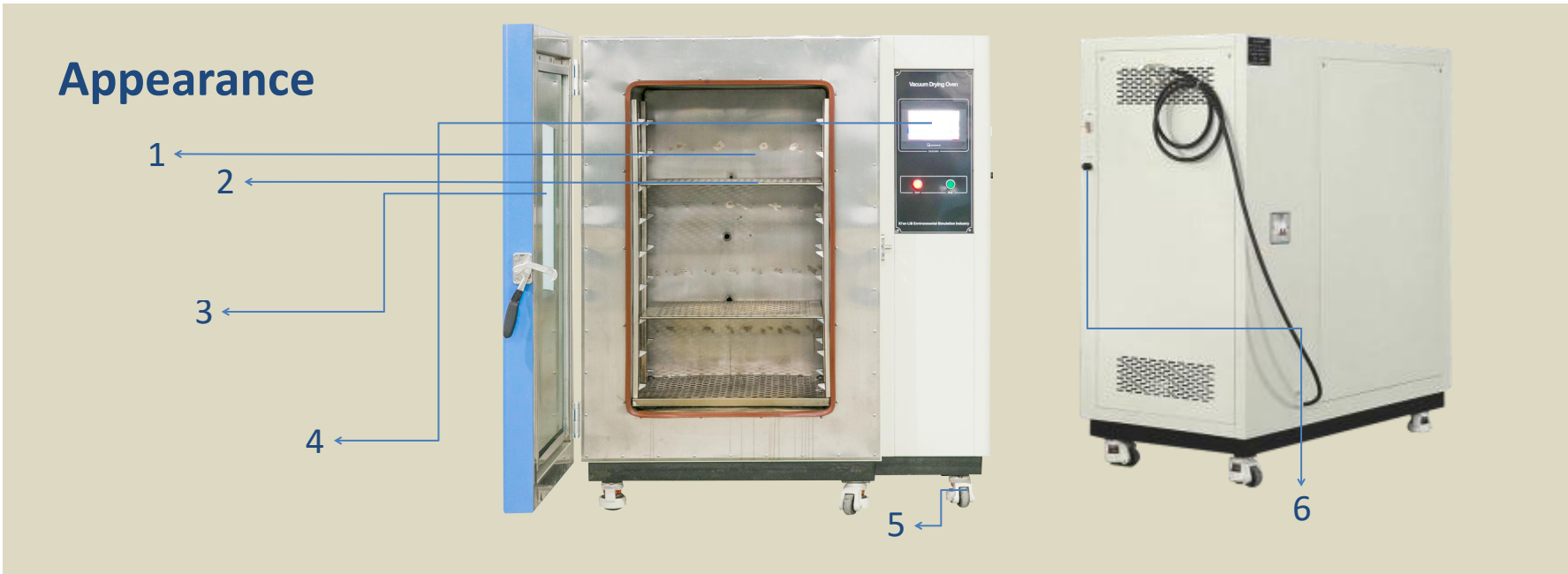
Model		VO-20	VO-30	VO-50	VO-90	VO-125
Internal Dimension (mm)		300x300x275	320x320x300	415x370x345	450x450x450	500x500x500
Overall Dimension (mm)		610x490x450	630x510x490	730x560x550	740x610x595	790x660x645
Interior Volume		20L	30L	50L	90L	125L
Parameter	Temperature Range	+35 ℃ ～+350 ℃				
	Heating Rate	6 ℃ / min				
	Vacuum degree	-133pa				
	Heating Element	Nichrome heater				
	Controller	Programmable color LCD touch screen controller				
		Ethernet connection, PC Link(Optional)				
	Temperature Sensor	PTR Platinum Resistance PT100Q/MV A-class				
	View Window Size(mm)	120*150				
Material	Safety Device	Over-temperature Protection; Over-current Protection; Earth leakage Protection, Phase Sequence Protection				
	Exterior Material	Steel Plate with protective coating				
	Interior Material	SUS316 stainless steel				
	Thermal Insulation	Polyurethane foam				
	Observation Window	Interior lighting, double-layer thermo stability silicone rubber sealing				
Vacuum pump		Built-in vacuum connection tube and vacuum pump				
Standard Configuration		2 shelves				
Power Supply		220V 50Hz / 380V 50Hz				
Maximum Noise		65 dBA				
Environmental Conditional		5℃～+35 ℃    ≤85% RH				

- ▣ High temperature can up to +350℃.

▣ Equipped with vacuum pump.
- ▣ Standard & customized.

\* pay attention to the environmental condition during installing





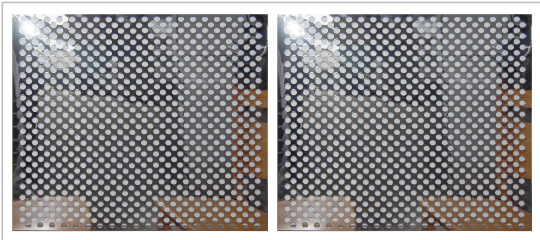
1.Workroom

The internal material is SUS316 stainless steel, mirror surface, rust-proof, high temperature and corrosion resistance;  
Nice ruggedness and long life.



2.Sample Shelf

SUS304 stainless steel punching sample shelf 2pcs;  
Standard load of 50KGS for each layer of sample shelf;  
The height of the shelf is adjustable and can be removed directly to facilitate the various sizes of test samples.  
Conducive to the air circulation.



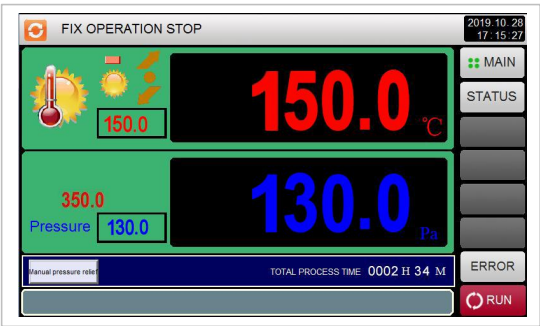
3.Viewing Window

Three layer insulating glass, made of tempered glass.  
built-in LED light for the work room lighting ;can clearly observe samples.  
The light control button is located below the controller.



4.Controller

PID programmable color touch screen controller  
Can edit 120 programs 20 segment.  
LIB also can preset program into the controller based on user testing requirements.  
The set system language is English for standard.



5.Castor

Install 4 castors for easily moving, and with brakes function.  
Castor height is adjustable.



6. Release valve

After the drying is completed, first open the release valve to release the gas inside, and then open the door.



7.Insulation Layer

10cm thick polyurethane foam  
Better insulation performance, degradation resistance, environmental protection, noise reduction.



8.External Materials

A3 steel plate with galvanized coating;  
Electrostatic treatment; High and low temperature corrosion resistance; High hardness, anti - impact  
Very high safety factor;  
Color can be customized.

9.Vacuum Pump

Built-in vacuum connection tube and vacuum pump for a firm connection. The vacuum pump is automatically controlled to start pumping, and the vacuum gauge indication value reaches the set value.

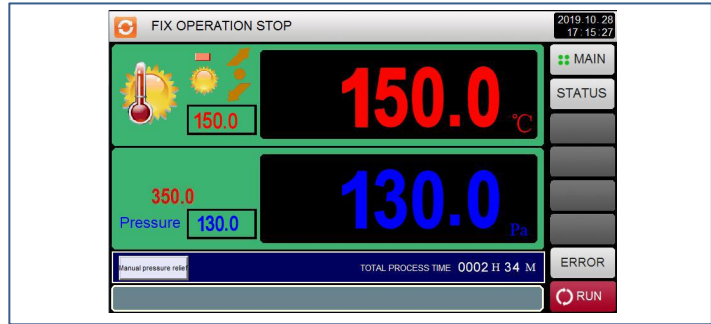


Core Function



Heating System

Heating element is Nichrome heater, and after energization, the resistance becomes larger and the temperature rises.



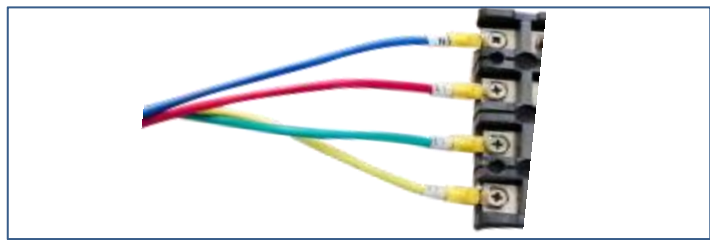
Controller System

The PID controller as the main control unit to command, operate, detect and redistribute the various components of the equipment to achieve maximum effective use.  
The temperature control adopts P.I.D. S.S.R. system synchronous coordinated control, which can improve the stability and life of the control components and interface.  
Screen display function: LCD display, which can display test conditions (including temperature section, vacuum value, cycle number, running time and remaining time, etc.).



Temperature Sensor

PT-100 Class A sensor, real-time accurate detection and display of temperature changes at 0.001 degrees.



Wiring System

Voltage 380V 50Hz 3 phase.  
L1, L2, L3, PE, N, grounding protection.  
Standard 2m long cable,

Over Temperature Protection	Over Current Protection Earth Leakage Protection	Phase Sequence Protection
-----------------------------	---	---------------------------

Protection System

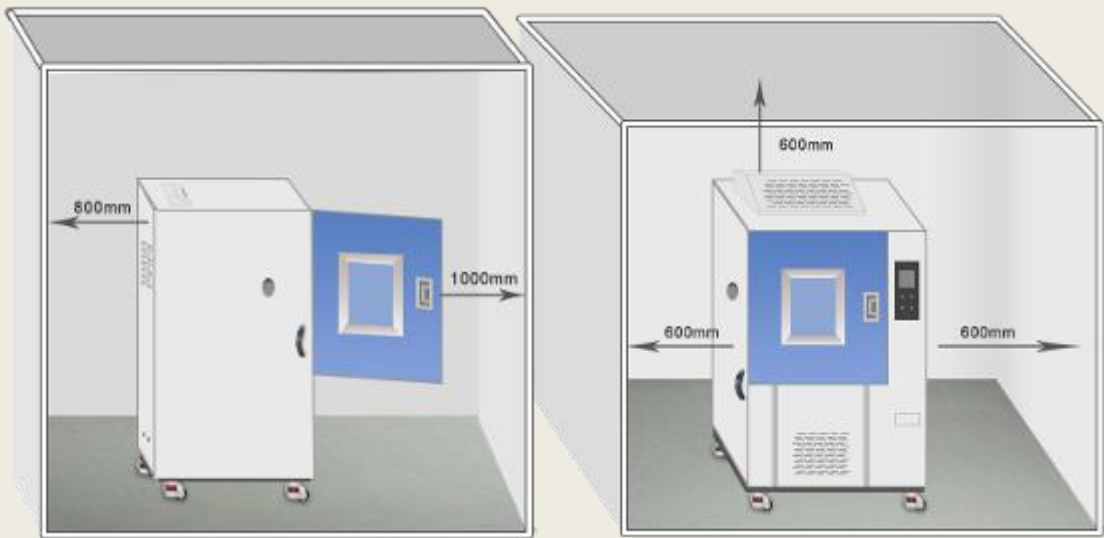
## Install Condition

### Environment Conditions

Temperature: +5°C ~ +35°C  
Relative humidity: ≤85%;  
Pressure: 86 KPa—106 KPa

### Space Conditions

Sufficient space for ventilation



**\*Safety Instruction:** 1.Prohibited to test explosive, inflammable and high corrosive substance  
2.Chemical exposure to the equipment is prohibited  
3.Equipment must be safety on the ground to avoid electrostatic induction

## Packaging



First, seal chamber with waterproof plastic film. Protect chamber from seawater corrosion.  
Second, buffer foam is placed in the four corners of the chamber. It is used for fixing equipment to prevent shaking and damaging chamber during transportation.



Plywood: standard wood export packaging. The wooden box is fixed by sheet metal to prevent damage during transportation.

Gross weight: 320kgs~  
Package size: 1170\*1090\*1720 mm

## Warranty Condition

Our company will repair the product, if the product, the material of the parts, the design and manufacturing of the products raised hardware problems caused by product itself rather than human error within three years warranty period since the date of dispatching by the customer.

Our company repairs the products, but will collect the basic costs of the spare parts after the warranty period, but service is free always.

## Shipping



**Material:** Export standard wooden box  
\*Can be used for Sea, Air, Railway, Truck and multimodal transport.

## Warranty & Service

- 3 Years Warranty, Lifelong Follow-up Services

### Professional After-sales Team

If you have any questions during operation, we will supply solution to you with 24 hours.

## How to Service

1. At first, our test chambers are produced based on 20 years product lifetime.  
Normally once test chambers have problems, we judge the problems, and send spare parts to our customers, and teach them how to change new parts on by email or video, all spare parts and shipping cost (by DHL, TNT, and FedEx) paid by LIB.
2. If the customer needs our engineer on-site service, they only need pay the ticket accommodation to our Engineers, service is for free.
3. If products still can't use after our engineers repair, we will produce a new test chamber (same as the old one) to our customers with no charge.

## PROVIDING TEST SOLUTION, PROVIDING TEST EQUIPMENT

Xi'an LIB Environmental Simulation Industry is a lead provider of environmental test chamber in China, with its own brand (LIB) design, production, sales and service since 2009. We continually update technology and develop new products for customer's needs.

Our main products included temperature and climate test chambers, corrosion chambers, weathering testers, IP dust and rain chambers, ozone test chamber, noxious gas SO<sub>2</sub> H<sub>2</sub>S chamber, walk-in chambers. We provide test chamber, we provide test solutions. Standard and customized products to meet different customer needs.

By 2018, global market has spread to 51 countries to USA, Canada, Mexico, Brazil, Peru, Russia, German, UK, France, Finland, Netherlands, Poland, Switzerland, Thailand, Philippines, Singapore, Malaysia, Australian, South Africa etc. and the market continues to expand.

At present 7 Tier-one agents around the world provide LIB products, installation and maintenance service for customers. Make things simple and convenient.

### Contact Us

Website: [www.lib-industry.com](http://www.lib-industry.com)

Add: No.5 Zhangba First St, Xian High-Tech Area, Shaanxi Province P.R.China 710065

Tel: +86 29 68918976

WhatsApp: +86 18700875368

Skype: serena\_lib

Email: [serena@lib-industry.com](mailto:serena@lib-industry.com)

Sales Team: [sales@lib-industry.com](mailto:sales@lib-industry.com)

After Sales Team: [asd@lib-industry.com](mailto:asd@lib-industry.com)

Shipping Team: [vip@lib-industry.com](mailto:vip@lib-industry.com)

Finance Team: [account@lib-industry.com](mailto:account@lib-industry.com)

## PARTNER

LIB Industry®

LIB became a registered trademark of our company since 2017 year.



# CE ROHS

